



# St Anne's Catholic Primary School

*Living and working as Jesus taught us!*

[www.stannesprimaryknowsley.co.uk](http://www.stannesprimaryknowsley.co.uk)

Headteacher: Mr. L Anderson

**Friday  
29th  
Septiembre  
2023**

## St Anne's Catholic Primary School - Weekly News

### Highlights of the Week

This week at St Anne's Catholic Primary School...

- On Monday KS2 joined together for Prayer & Liturgy. We reflected on the theme of love and considered what we could learn from the Parable of the Lost Sheep  
[#SacpskRE](#)
- Thank you to all the families who joined us this week for our Meet the Teacher presentations
- Well done to our Football team this week who took part in The ADAM Foundation Huyton Yr5 /6 Football League



A huge well done to our former pupil Roisin who won a Black History Month competition whilst in Year Six. Watch out for her artwork on the Police Van and at the International Slavery Museum. Well done we are very proud of you.  
[#SacpskHistory](#) [#SacpskPSHE](#)

### Attendance

Weekly Attendance	
Wales - Mrs Henesy	97.4%
Scotland - Miss Harrison/Miss Barton	90.2%
Bumblebees - Mrs Feeney	99.6%
Dragonflies - Mrs Daniels	95.0%
Ladybirds - Miss Frodsham	99.1%
Year 3 - Miss Mathias	92.2%
Year 4/3 - Mrs Fogg	98.2%
Year 4 - Miss Williams	96.4%
Year 5 - Mrs Flood	90.0%
Year 6/5 - Mrs Reale - Smith	96.1%
Year 6 - Miss Hodgkiss	95.0%

Our school target is 97%

Green met the target or exceeded, Yellow just below, Red below.

Our overall school percentage this week is: 95.6%



Well done to **Bumblebees** who are this weeks attendance winners with 99.6%  
Which class will get 100% attendance next week?

### Extra—Curricular Activities

Our Extra—Curricular Activities started the week commencing 11th September. Clubs available are listed below. If you would like to add your name to Year 3 and 4 Cricket, please contact the school office. Payment must be made via Parentpay within the 1st week that the club begins. Good Grub Club and Spanish Club must be booked directly with providers (see below).

Day	Club	Year Group	Time
Monday	Girls Football (begins 18th September) <b>FULLY BOOKED</b>	Years 4-6	3.10pm - 4.10pm
Tuesday	Football <b>FULLY BOOKED</b>	Years 5 and 6	3.10pm - 4.10pm
Wednesday	Knowsley Catholic Choir	St Columba's Space Centre	4-5-pm
	Multi Skills <b>FULLY BOOKED</b>	KS1	3.10pm - 4.10pm
Thursday	Cricket <b>5 SPACES REMAINING</b>	Years 3-4	3.10pm - 4.10pm
	Good Grub Club <b>Contact Claire 07411212113</b>	KS2	3.10pm - 4.10pm
Friday	Running Club	Year 4-6	3.10pm - 4.10pm
	Spanish Club with Liverpool Language Academy <b>Contact 01512594455</b>	Reception — Year 6	3.10pm—4.10pm

### Breakfast Club and Wrap Around Club

Places should be booked via the app for Breakfast Club and Wrap Around Club. Payment for these should be made in advance.

### Wrap Around Club and Extra Curricular Activities

If your child attends an Extra Curricular Club run by the school (not outside providers - Good Grub/Spanish) on the same night as Wrap Around Club we will apply a discount for the cost of the Extra Curricular Club. Please state on your Wrap Around booking via the app that your child will also be attending a club.

**Please note: there are several balances outstanding which need to be paid before children attend.**

SATs week for year 6 will be week beginning **13th May 2024**. Children will have plenty of support and preparation before the week arrives. Please ensure your child is in school for this week, as always no holidays will be permitted.

**The PTA will collect for Foodbank on the last Friday of every month.  
Thank you in advance for any donations.**

## Notices

### School Dinners

On Monday 2nd October we will be on week 1 of our school dinner menu, which can be viewed on the app or school website:

<http://stannesprimaryknowsley.co.uk/about-us/school-meals-menu/>



The new price of school lunches is £2.20 per day.

It is National School Census Day on Thursday 5th October 2023, which is an important day for funding for schools. The Local Authority will use the number of children staying for school meals to determine future funding, so therefore the more children who have a school meal that day, the more money we will receive as a school to spend on our children.

The menu for Thursday 5th October is fries, chicken nuggets, beans, a drink and a muffin or alternatively a Baked Potato with a choice of fillings, either beans, tuna or cheese. If you wish your child to have a meal on the Census day please pay £1.00 via lunches on Parentpay. Payment is not required for Reception (Wales and Scotland) and Key Stage 1 (Bumblebees, Dragonflies and Ladybirds) classes.

Many thanks,  
Mr L Anderson

### Reception Parent Partnership Phonic Workshop.

Reception staff will hold a phonic workshop for Reception parents and pupils on Wednesday 4th October at 4pm in the school hall. This is an opportunity to see how you can help your child to learn to read and write over the coming year. We hope you can all attend.



Parents of pre school children  
It's time to apply for a school reception class place  
September 2024 Intake

Knowsley residents - Apply online by visiting [www.knowsley.gov.uk](http://www.knowsley.gov.uk)

**CLOSING DATE 15TH JANUARY 2024**

- If your child's date of birth falls on or between 1 September 2019 and 31 August 2020, now is the time to apply for a reception class place in school for September 2024.
- There is no automatic transfer from nursery – everyone must apply between 12 September 2023 and 15 January 2024 by completing the application form of the Local Authority in which you live.
- Knowsley residents should apply by accessing the online application portal via the Knowsley website [www.knowsley.gov.uk](http://www.knowsley.gov.uk).
- It is the responsibility of the parent/carer to ensure they have read the admission policy of each school they are considering applying for and provided all the information required to support their application – this may include completing a supplementary information form with some individual schools where requested.
- For full information about the application and allocation process and admission policies for individual schools, visit the school admission pages at [www.knowsley.gov.uk](http://www.knowsley.gov.uk) and access the 'Knowsley Primary Admission Composite Prospectus'.

For further advice, contact Knowsley School Admissions Team

Email: [schooladmissions@knowsley.gov.uk](mailto:schooladmissions@knowsley.gov.uk)

Tel: (0151) 443 5143 / 5142 / 3372



Parents of year 6 Children  
It's time to apply for a secondary school place (year 7)  
September 2024 Intake

Knowsley residents – Apply online by visiting [www.knowsley.gov.uk](http://www.knowsley.gov.uk)

**CLOSING DATE 31ST OCTOBER 2023**

- If your child is currently in year 6 of primary school or their date of birth falls on or between 1 September 2012 and 31 August 2013, now is the time to apply for a year 7 secondary school place for September 2024.
- There is no automatic transfer – everyone must apply between 12 September 2023 and 31 October 2023 by completing the application form of the Local Authority in which you live.
- Knowsley residents should apply by accessing the online application portal via the Knowsley website [www.knowsley.gov.uk](http://www.knowsley.gov.uk).
- It is the responsibility of the parent/carer to ensure they have read the admission policy of each school they are considering applying for and provided all the information required to support their application – this may include completing a supplementary information form with some individual schools where requested.
- For full information about the application and allocation process and admission policies for individual schools, visit the school admission pages at [www.knowsley.gov.uk](http://www.knowsley.gov.uk) and access the 'Knowsley, Secondary Admission Composite Prospectus'.

For further advice, contact Knowsley School Admissions Team

Email: [schooladmissions@knowsley.gov.uk](mailto:schooladmissions@knowsley.gov.uk)

Tel: (0151) 443 5142 / 5143 / 3372



## Notices

### Staff News

This week Mrs Byrnes is leaving us after 20 years at St Anne's Catholic Primary School. Mrs Byrnes has worked in the school office doing a wonderful job over the years and will be sorely missed by everyone here at St Anne's. We wish you a happy retirement!

### End of day collection 3:10pm

Families, if you need to speak with your child's class teacher at the end of the day to pass on a quick message, please wait until all children have been dismissed as our staff will be focused on ensuring that all children are collected by their usual family members.

### New Nursery Intake 2024—2025

For our nursery intake September 2024-2025 it is so important that your child is baptised in the catholic faith and you have evidence of this. This applies to any places becoming available before this intake. We have reviewed the closing date and applications will now close on **10th March 2024**. If you have sent a form into school please ensure you have a receipt for this. Please ensure you have sent in a copy of the baptism certificate with your application before the closing date.

### School Admissions to Reception Class 2024 and Year 7 Secondary School

If your child is to start Reception Class in September 2024 the online portal is now open to make your application via Knowsley School Admissions (see leaflet on the next pages). **You must also fill in a Supplementary Information Form which should be handed in to the school office. The closing date is 15th January 2024—this is the form in which you indicate if your child has been baptised in the catholic faith.**

If your child is in Year 6 now is the time to make your online application for a secondary school place via Knowsley School Admissions. **The closing date is 31st October 2023.**

### Delivery of Fluenz Immunisation—Nursery to Year 6

The Immunisation Team will be in school on Monday 2nd October to deliver the annual Fluenz Immunisations for children from Nursery to Year 6. The online link is now active <https://econsent.merseycare.nhs.uk/> to give your consent.

### School Nurse

The school nurse is available at school for a drop in on **Tuesday 3rd October at 9am** until 10am. If you would like to see the school nurse to discuss your child please call the school office on 01514778260 and book a space. If parents have any concerns regarding your child's health, you can attend the drop in sessions or complete this online parent request for support form.

[0-25 Service in Knowsley - Request for support - Wirral Community Health and Care NHS Foundation Trust \(wchc.nhs.uk\)](https://www.wchc.nhs.uk/)



Keep up to date with all the latest going's on— follow us for the latest news about the wonderful things our children do at school! Follow us on Twitter @StAnnesKnowsley or on Instagram stannescatholicprimaryschool





## Dates for Your Diary

	What's On
	<b>October 2023</b>
<b>Monday 2nd—Friday 6th October</b>	National Poetry Week
<b>Monday 2nd October</b>	Delivery of Fluenz Immunisation N-Y6
<b>Tuesday 3rd October</b>	X Country at Newsham Park
<b>Wednesday 4th October</b>	Phonics Workshop for Reception Parents and Pupils 4pm
<b>Thursday 5th October</b>	Keeping Up with the Kids Maths KS2 Week 2 9:15—11:15am
<b>Thursday 5th October</b>	KS1 Harvest Festival Craft 1:30-3:00pm
<b>Thursday 12th October</b>	School Portrait Photographs please book on the app if you intend for your child to have a photograph taken—thanks
<b>Thursday 12th October</b>	Keeping Up with the Kids Maths KS2 Week 3 9:15—11:15am
<b>Thursday 12th October</b>	Foundation Stage Reading 1:30-3:00pm
<b>Monday 16th—Friday 20th October</b>	Road Safety Week
<b>Thursday 19th October</b>	Keeping Up with the Kids Maths KS2 Week 4 9:15—11:15am
<b>Thursday 19th October</b>	KS1 Phonics with Vicky Powell
<b>Friday 20th October</b>	UKS2 Living History Day WW2
<b>Wednesday 25th October</b>	Halloween Discos—KS1 4-5pm, KS2 5:15-6:15pm EYFS Wednesday PM in school time - simple costume Welly Walk and celebrations
<b>Thursday 26th October</b>	Keeping Up with the Kids Maths KS2 Week 5 9:15—11:15am
<b>Thursday 26th October</b>	Foundation Stage Phonics with Vicky Powell
<b>Friday 27th October</b>	UKS2 Rejoice Assembly
	<b>November 2023</b>
<b>Sunday 12 Nov 2023</b>	Mass at St Agnes - invitation to Commitment in supporting children through Holy Communion Journey
<b>Monday 13th—Friday 17th November</b>	Friendship Week
<b>Monday 13th November</b>	Odd Socks Day
<b>Thursday 30th November</b>	St Andrew's Day—wear a splash of blue/navy on your uniform
	<b>December 2023</b>
<b>Friday 1st December</b>	Own Clothes Day—for Chocolates/Bottles
<b>Wednesday 6th December</b>	Christmas Movie Night KS1 3:30—5:15 pm, KS2 6pm onwards
<b>Friday 8th December</b>	Lower Key Stage 2 Rejoice Assembly 2.45pm
<b>Friday 8th December</b>	Key Stage 1 at the Brindley Pantomime Runcorn
<b>Tuesday 12th December</b>	Key Stage 2 at the Brindley Pantomime Runcorn
<b>Wednesday 13th December</b>	KS1 Nativity for Year 1 families 2pm
<b>Wednesday 13th December</b>	After School Grotto with KS2 Carol Concert 6.:30pm
<b>Wednesday 13th December</b>	Carols around the Crib 6:30pm KS2 Children
<b>Thursday 14th December</b>	KS1 Nativity for Year 2 families 9:30am
<b>Thursday 14th December</b>	EYFS Nativity (pm)
<b>Friday 15th December</b>	EYFS Nativity (am)
<b>Tuesday 19th December</b>	Christmas Jumper Day/Christmas Dinner
<b>Wednesday 20th December</b>	Final Day—Full School Uniform

## St Anne's Catholic Primary School in the Parish



### Prayer and Liturgy

Our Prayer and Liturgy focus next week is: **Harvest**

### Mass times at St Agnes and St Aidan's Church this weekend

**Saturday 30th September 2023:**  
5:30pm Mass

**Sunday 1st October 2023:**  
9:30am Mass

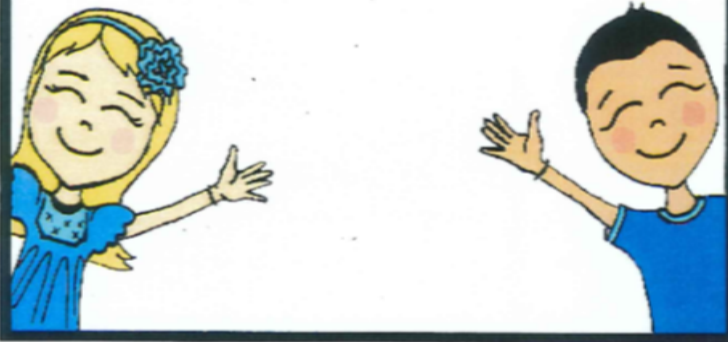


### Our RE Topic is: *Belonging*

Our St Anne's Catholic Primary School child focus for next week is: *Progress*  
St Anne pray for us and our Parish—St Agnes pray for us.

- There will be a mass at St Agnes Church for Year 4 on Sunday 7th January 11am -12pm.
- There will also be a Mass at St Agnes on Sunday 12th November 2023—an invitation to commitment in supporting children through their Holy Communion Journey
- Also if anyone in Key Stage 2 would like to serve on the alter please contact the Parish Office

## **We are an Allergy Aware School.**



In St Anne's Catholic Primary School we have children with severe allergies. To enable us to safeguard all of our pupils we ask that food with any kind of nut is not brought in to school.

Your co-operation in this matter is very much appreciated.